

MSCA POSTDOCTORAL FELLOWSHIP

AT PALACKÝ UNIVERSITY OLOMOUC

SUPERVISOR



Mgr. Ema Jelínková, Ph.D. is a research assistant at Palacký University Olomouc. Her research interests include **Scottish literature, women's writing** and **satire**. She is the author of the survey *British Literary Satire in Historical Perspective* (2010)

and the monograph *Ambivalence v románech Muriel Sparkové* (2006). She has co-authored a series of collective monographs on aspects of Scottish fiction, including *Scottish Gothic Fiction* (2012) and *Scottish Women Writers of Hybrid Identity* (2014).

PALACKY UNIVERSITY OLOMOUC

The Department of English and American Studies is as old as the re-established university.

It started its **educational and research activities** in 1946 as one of the topmost institutions pursuing the classical model of modern philology, comprising language, literature and cultural studies. This profile has been maintained to the present. In the current European educational context the scope of its interest has been broadened by the offer of applied and theoretically less rigorous programmes, such as English for Translation and Interpreting.

Submit a **research outline** (including research objectives, novelty, state of the art and references), **CV** and a separate list with **5 most important publications** of the 5 last years to: ema.jelinkova@upol.cz by **16.3.2025**.

Letters of recommendation will be requested in the second selection round.

Potential candidates need to have held a doctoral degree (Ph.D.) for **no longer than 8 years** and have **not resided in the Czech Republic for more than 12 months** during the **last 3 years**, at the time of the deadline.

PREFERRED RESEARCH TOPICS

- Two Centuries with Jane Austen
- Women Playwrights in Restoration Drama (notably Aphra Behn)
- Gothic Aspects in Scottish Literature since James Hogg till Jenni Fagan
- Satire in English/Scottish Literature since Chaucer to Banksy
- Scottish Writers of Postcolonial Identity

CANDIDATE REQUIREMENTS

- Ph.D. in either English Literature, Anglophone Literature or English and American Literature
- Sound knowledge of English Literature since Elizabethan Era till 2020
- Teaching experience; B.A. level, ideally M.A. level
- At least 2 published articles in respectable literary journals, one of them indexed in Scopus or Web of Science
- Participation in a major project, or a minor project of one's own
- Willingness to participate in teaching and student-oriented activities

**ONE
PROPOSAL,
THREE
CHANCES TO
GET FUNDED!**

1

MSCA Funding
score > 93 %

2

ERA Fellowship
score > 91 %

Funding chance for
applying at the
Widening country
(Czechia)

3

MSCA CZ
score > 70 %

Czech structural
funds.
Achieved by up to
80 % applicants

For more information,
see these **websites**:

 **GRANT
office**



Faculty
of Arts

Palacký University
Olomouc

MSCA POSTDOCTORAL FELLOWSHIP

AT PALACKÝ UNIVERSITY OLOMOUC

WHAT IS MSCA PF?

The **Postdoctoral Fellowship** within the framework of **Marie Skłodowska-Curie Actions (MSCA PF)** is a program supporting postdoctoral researchers in **developing their careers** and fostering their **excellence in research**. To achieve this goal, the program offers **talented early-career scholars** to carry out their **research abroad** while covering the costs of such mobility. MSCA postdoctoral fellows realise individual projects in close **cooperation with a supervisor** at the host institution. Interdisciplinary projects and involvement of non-academic sector (through secondments) are encouraged.

MSCA PF CONDITIONS

- Postdocs with **no more than 8 years since PhD** termination at the time of submission deadline
- **Costs covered:** living and mobility allowance; family allowance (if applicable); research, training and networking activities; management and indirect costs related to the project
- Optional **short-term secondments** anywhere in the world within the duration of the project
- Optional additional **placement in a non-academic organisation** for max. 6 months after finishing the project

EUROPEAN FELLOWSHIP

- Project of 12-24 months realised directly at **Palacký University Olomouc** in Czechia
- For researchers of **any nationality**
- **Previous residence** in Czechia for max. 12 months in the past 3 years

GLOBAL FELLOWSHIP

- Project of 12-24 months realised **outside of the EU + return phase** of 12 months **to Palacký University**
- For **citizens** and **long-term residents** of the **EU** and Horizon Europe **Associated Countries** only
- **Previous residence** in the chosen third country for max. 12 months in the past 3 years

PALACKÝ UNIVERSITY OLOMOUC

- is **one of the top Czech universities** according to international rankings
- is holding the European Commission's **HR Excellence in Research Award**
- is part of **European universities networks (AURORA)** fostering international collaboration
- provides **modern infrastructure** in various disciplines of natural as well as social sciences
- offers essential **services to its employees**, including Social Security and Health insurance, childcare services or employees benefits
- **higher chances to succeed** in MSCA PF due to **WIDERA schemes** within Horizon Europe

FACULTY OF ARTS (FF UP)

- offers **interdisciplinary expertise** due to its specialisation in a wide range of **humanities and social sciences**
- provides with **modern facilities** in the heart of the beautiful **historical city of Olomouc**

GRANT OFFICE FF UP

- offers project management **support**
- **Anna Lukešová** (anna.lukesova@upol.cz)



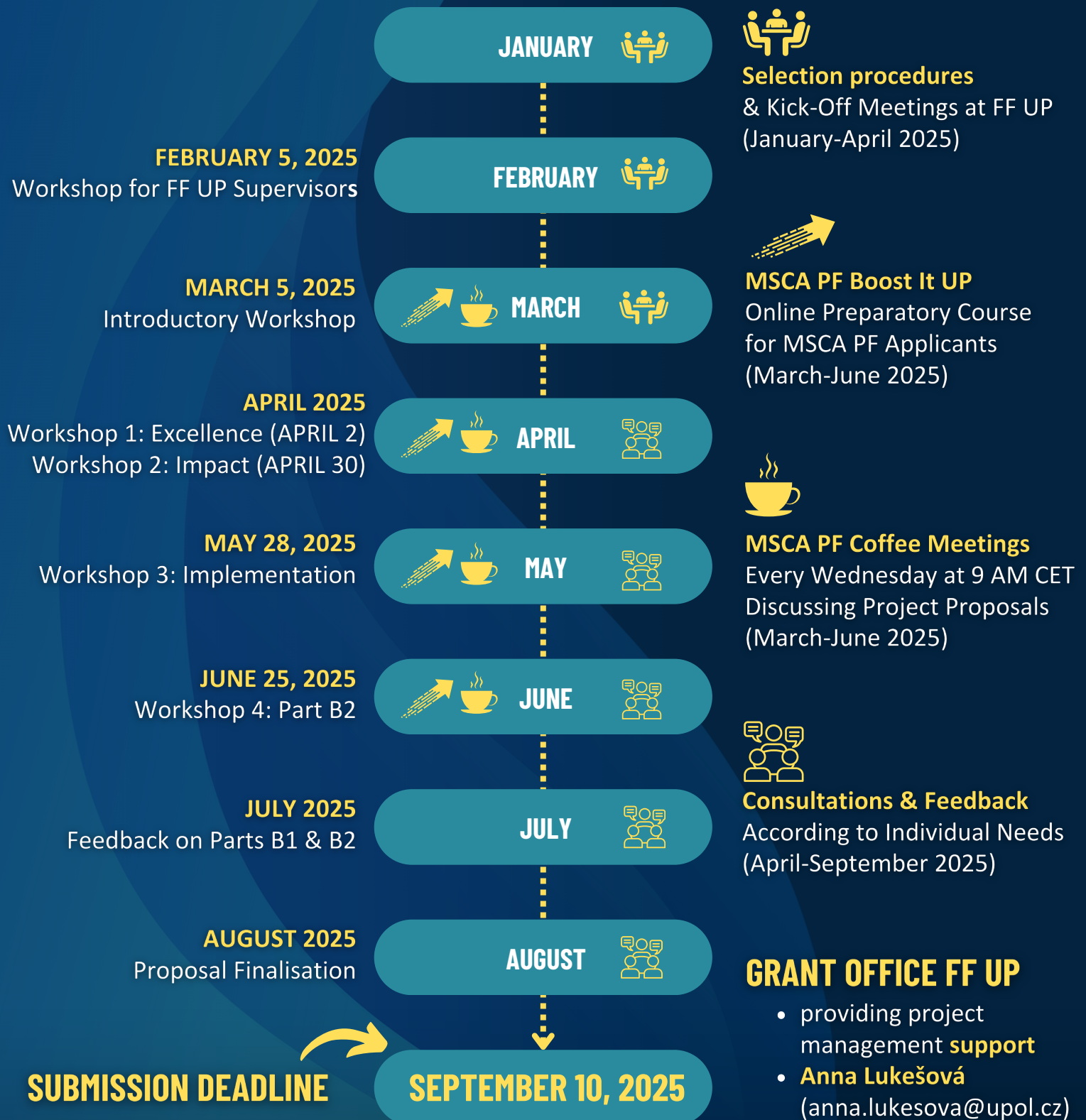
Faculty
of Arts
Palacký University
Olomouc



MSCA POSTDOCTORAL FELLOWSHIP

AT PALACKÝ UNIVERSITY OLOMOUC

MSCA PF 2025 TIMELINE



Faculty of Arts
Palacký University Olomouc

